

4.15 PUBLIC SERVICES, UTILITIES, AND RECREATION

TABLE OF CONTENTS

4.15 PUBLIC SERVICES, UTILITIES, AND RECREATION.....	4.15-1
Impacts Evaluated in other Sections	4.15-1
Setting	4.15-1
Police Services	4.15-1
Fire Services.....	4.15-2
Parks and Recreation.....	4.15-2
Water	4.15-3
Wastewater.....	4.15-5
Storm Drainage	4.15-6
Solid Waste	4.15-6
Goals, Objectives, and Policies.....	4.15-7
Evaluation Criteria with Significance Thresholds	4.15-9
Methodology	4.15-9
Impacts and Recommended Mitigation Measures	4.15-10
Cumulative Impacts	4.15-18
Summary of Significant Impacts and Mitigation Measures	4.15-20
Preparers and References	4.15-21
Preparer	4.15-21
Reviewers.....	4.15-21
References.....	4.15-21
Persons Contacted.....	4.15-22

LIST OF TABLES

Table 4.15-1 Goals, Objectives, and Policies – Public Services, Utilities, and Recreation	4.15-7
Table 4.15-2 Evaluation Criteria with Significance Thresholds – Public Services, Utilities, and Recreation	4.15-9
Table 4.15-3 Public Services, Utilities, and Recreation Impacts.....	4.15-10
Table 4.15-4 Types of Materials and Amounts of Fill Removed	4.15-13
Table 4.15-5 Summary of Significant Impacts and Mitigation Measures – Public Services, Utilities, and Recreation.....	4.15-20

LIST OF FIGURES

Figure 4.15-1 Laguna de Santa Rosa Trails Plan in Relation to Seasonal Storage Project Sites..... 4.15-4

4.15 PUBLIC SERVICES, UTILITIES, AND RECREATION

This section assesses the potential increased demands for police and fire services, park and recreation facilities, water, sewage treatment and disposal, and solid waste disposal capacities. To provide a context for the analysis, the setting section provides information on current levels of service and recreational opportunities for the affected jurisdictions in the Seasonal Storage Project (SSP) study area.

IMPACTS EVALUATED IN OTHER SECTIONS

The following subjects are related to the Public Services, Utilities, and Recreation Section, but are evaluated in other sections of this EIR:

- Consistency of the SSP with the Laguna de Santa Rosa Protected Lands Trails Plan is evaluated in Section 4.1, Land Use.
- Potential impacts to wells and septic systems are evaluated in Section 4.5, Groundwater
- Bicycle Travel. Potential impacts of SSP construction on bikeways and bicycle travel are evaluated in Section 4.10, Transportation.
- Population Growth. Growth impacts of the SSP are discussed in Chapter 5, CEQA-required Sections.
- Construction Noise Impacts on Schools and Recreation Facilities. Impacts are discussed in Section 4.12, Noise.
- Traffic Lane Closures and Interference with Access to Fire, Police, School, or Recreational Facilities. Impacts are discussed in Section 4.10, Transportation.
- Impacts from increased energy demand are discussed in Section 4.16, Energy.

SETTING

As a basis for evaluating public services, utilities, and recreation impacts, this section describes the existing facilities and services within the SSP study area.

Police Services

The City has its own police services. The Santa Rosa Police Department (SRPD) currently employs 172 sworn officers, 87 civilian employees, and 50 volunteers in Police Services serving the incorporated areas of the City. The average response times for police services in the City are approximately six minutes for emergencies, 10 minutes for urgent calls, and 20 minutes for routine calls (Cole 2007). The police response-time goal is six minutes for emergency calls, 14 minutes for urgent calls, and 32 minutes for routine calls (Santa Rosa 2002). The SSP sites, which are located on City-owned property, are located within Beat 7 of the jurisdiction of the SRPD.

The Sonoma County Sheriff's Department is responsible for primary law enforcement services of the unincorporated area of Sonoma County and the cities of Windsor and Sonoma. Law enforcement services are provided by over 275 Deputy Sheriffs in the Patrol Bureau, Investigations Bureau, Court Security, and Transportation Bureaus.

Fire Services

The Santa Rosa Fire Department (SRFD) is responsible for responding to emergency incidents within Santa Rosa. These incidents include fires of all types, medical and rescue emergencies, hazardous materials incidents, special services, good intent, and false calls. The department currently has 139 employees to protect about 170,000 residents. To provide a timely response, eight fire stations are strategically located throughout the City and adjacent Roseland District in unincorporated Sonoma County. Each fire station houses an engine company and is staffed 24 hours a day. Several specialized pieces of equipment are maintained in various fire stations and are staffed on an "as needed" basis by personnel normally assigned to engine companies. The Department currently has two standby engines and a standby ladder truck in reserve. The SRFD is also a party to several mutual aid, automatic aid and contract response agreements with other fire agencies. These agreements entail the provision of service by SRFD to other entities in return for service to Santa Rosa, or for the payment of fees or reimbursement of expenses (Santa Rosa 2005).

Fire protection service for Kelly Farm, Brown Farm, and Alpha Farm is currently provided by Fire Station No. 8, in the Roseland Fire Protection District located at 830 Burbank Avenue, Santa Rosa. In June 2005, the City selected a 19,810 square foot single-story commercial building located at 2373 Circadian Way (APN 035-133-023) for the site of the new Fire Station No. 10. The site has access to both Circadian Way and Corporate Center Parkway. Current plans call for the construction of an interim fire station within an existing building.

The City is a party to Redwood Empire Dispatch and Communications Authority (REDCOM), which provides regional fire and Emergency Medical Service (EMS) dispatching service for Sonoma County. REDCOM owns the dispatch center, located in the Sonoma County Sheriff's Office building and contracts with American Medical Response (AMR) to staff and operate the center. The contract between REDCOM and AMR contains a requirement that the dispatch of units must occur within 70 seconds, 90 percent of the time, during 911 emergency calls. The current average response time for fire services throughout the City for a Code Three response (i.e., response requiring the use of sirens and lights) is four minutes and 47 seconds. The Fire Department response goal is four minutes for 80 percent of emergency calls, five minutes for 90 percent of emergency calls, and six minutes or less for 100 percent of all emergency calls. The actual achievement rate is 30 percent response within four minutes, 59 percent response within five minutes, and 83 percent response within six minutes (Santa Rosa 2005).

Parks and Recreation

The SSP study area provides recreational opportunities for many activities including picnicking, hiking or bicycling, sightseeing, swimming, camping, horseback riding, canoeing

or kayaking, fishing, and wildlife viewing. Numerous parks and community centers are located in the City of Santa Rosa and there are county and state parks nearby.

Santa Rosa

The Santa Rosa Recreation and Parks Department operates and maintains 57 parks totaling over 514 acres. The City has the goal of acquiring approximately six acres of park and open space land per 1,000 persons between 2002 and 2020. A total of 158 acres of new park land is proposed to be created within the City limits (Santa Rosa 2002). Recreational areas adjacent to and east of the City's urban boundary include Spring Lake County Park that encompasses 320 acres including a 72-acre lake and the 5,000-acre Annadel State Park.

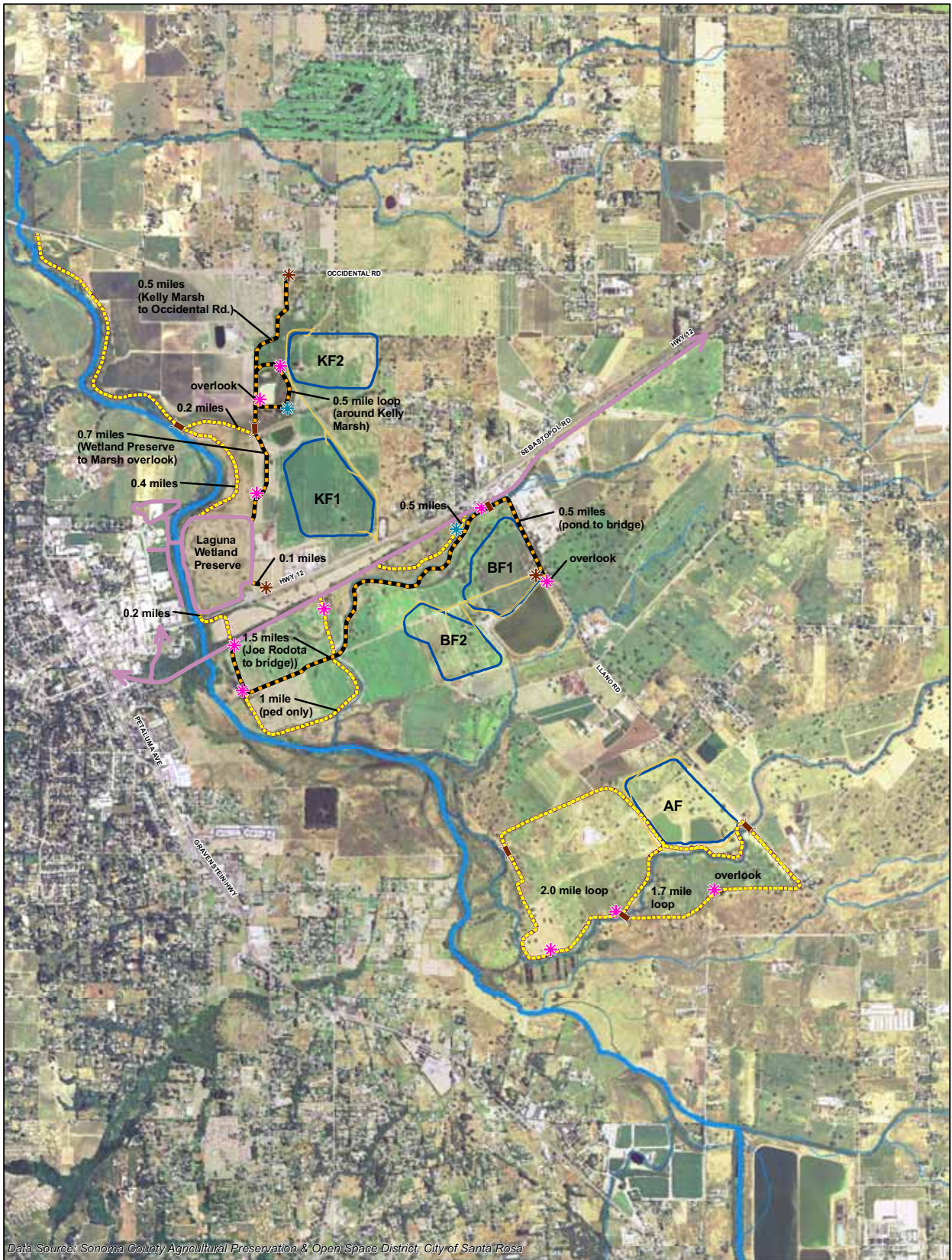
Sonoma County

Recreational lands in Sonoma County that are publicly accessible are comprised of 12,239 acres of County land, 41,604 acres of state lands, and 14,865 acres of federal lands (Sonoma County 2003a). County park standards are 20 acres of regional parks per 1,000 residents, 15 acres of open space parks per 1,000 residents, and five acres of regional recreational areas per 1,000 residents control and recreation.

Recreational facilities operated by the Sonoma County Regional Parks Department that are closest to the Kelly Farm, Brown Farm, and Alpha Farm sites are the West County Trail, Joe Rodota Trail and the Colgan Creek Trail. The West County Trail and Joe Rodota Trail are built along a 13-mile stretch of former railway. The trail connects Santa Rosa with Forestville and runs parallel to State Highways 12 and 116 between the two communities. The Joe Rodota Trail runs through the Brown Farm property. The Colgan Creek Trail begins at the intersection of Stony Point Road and Todd Road, Santa Rosa. This mile-long trail segment ends at Bellevue Avenue. The City plans to extend the trail from Bellevue Avenue to Victoria Drive. Other nearby preserves protected by the Sonoma County Agricultural Preservation and Open Space District include the Laguna Farms, Baletto Ranch and Carinalli properties. Existing and planned trails and associated facilities described in the *Laguna de Santa Rosa Protected Lands Trails Plan* (DCE 2006) are located within or near Kelly Farm, Brown Farm and Alpha Farm. The locations of these trails in relation to the Kelly Farm 1 (KF1), Kelly Farm 2 (KF2), Brown Farm 1 (BF1), Brown Farm 2 (BF2), and Alpha Farm (AF) pond sites are shown in Figure 4.15-1. The California Department of Fish and Game (CDFG), Todd Road Ecological Preserve, and the City of Sebastopol's Laguna de Santa Rosa Wetland Preserve is also in the vicinity.

Water

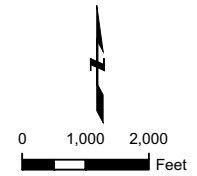
Surface water and groundwater are the primary sources of water supply in the SSP study area. The Russian River watershed provides the water supply for agriculture, municipal, and industrial uses.



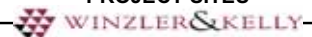
Data Source: Sonoma County Agricultural Preservation & Open Space District, City of Santa Rosa

Legend

-  Picnic Areas
-  Trail Staging Areas
-  Interpretive Signage
-  Stream Crossings
-  Existing Trails
-  New Multi-Use Trails
-  New Pedestrian Only Trails
-  Proposed Storage Ponds
-  Proposed Storage Roads
- KF = Kelly Farm
- BF = Brown Farm
- AF = Alpha Farm



**FIGURE 4.15-1
LAGUNA DE SANTA ROSA
TRAILS PLAN IN RELATION
TO SEASONAL STORAGE
PROJECT SITES**



Santa Rosa

The City's water service system has approximately 600 miles of water pipelines, 50,000 water services and meters, 6,000 fire hydrants and 26,000 water valves. The system includes 19 potable water booster pump stations and 22 steel reservoirs. The water system is maintained by city crews which are responsible for the system's maintenance, repairs and customer service during extended hours. The City's potable water supply is derived from the Russian River watershed and is delivered under contractual agreement by the Sonoma County Water Agency (SCWA).

Sonoma County

Most uses in unincorporated areas of Sonoma County draw potable water from on-site wells or small cooperative water systems which use well water. The SCWA is a special district providing water supply services to the SSP study area. The SCWA manages and maintains a water transmission system to nine cities and special districts in Sonoma and Marin counties.

Wastewater

Much of the wastewater generated within the City of Santa Rosa is collected in sanitary sewer pipelines and transported to the City's Laguna Treatment Plant for treatment. The remaining areas typically use individual septic systems.

Santa Rosa

The City's wastewater system collects, treats, and disposes of sewage from residential, commercial, and industrial uses. The City's sewer system consists of approximately 535 miles of sewer pipelines and 18 wastewater lift pump stations. Wastewater generated from the City of Santa Rosa is collected and conveyed to the Subregional Water Reuse Facility (Laguna Plant) for treatment and disposal. The Laguna Plant provides tertiary treatment of wastewater collected from the City of Santa Rosa and its Subregional System partners, which include Rohnert Park, Cotati, Sebastopol, and the South Park Sanitation District. The Subregional System is one of the larger recyclers of tertiary treated wastewater in Sonoma County, irrigating approximately 6,400 acres of farmlands, vineyards, and public and private urban landscaping annually. The Santa Rosa Subregional Water Reuse System is described in Chapter 1, Introduction, of this EIR.

Sonoma County

The SCWA manages the county sanitation zones and districts, which provide wastewater treatment, reclamation, and disposal. The zones include Airport/Larkfield/Wikiup, Geyserville, Penngrove, and Sea Ranch. The sanitation districts include the Occidental, Russian River, Sonoma Valley, and South Park County Sanitation Districts. The SCWA also provides wastewater service for certain unincorporated areas of Sonoma County such as Forestville, Guerneville, Monte Rio, areas around the Larkfield/Wikiup/Airport and small portion of Sonoma Valley.

However, most of the unincorporated parts of Sonoma County utilize individual septic systems for wastewater disposal. The Kelly Farm, Brown Farm, and Alpha Farm sites are located outside the greater Santa Rosa city limits, but have been annexed to the City and used by the City of Santa Rosa's Subregional System for storage of treated wastewater.

Storm Drainage

Storm drainage occurs within a given watershed identifiable by topographic features such as the direction of slope and contour. Stormwater not absorbed by the ground during rains flows into storm drainage systems that convey the stormwater into nearby waterways. The drainage system consists of gutters, curb inlets, underground pipes, ditches, channels, creeks, and rivers. Stormwater drainage systems within the Santa Rosa area flow into the Laguna watershed.

Santa Rosa

Stormwater within Santa Rosa drains through six drainage basins to the Laguna de Santa Rosa. Stormwater runoff is collected and disposed of through an integrated system of curbside gutters, underground pipelines, drainage ditches, and creeks. Santa Rosa's stormwater system incorporates detention facilities that minimize potential downstream impacts such as erosion or flooding. Northern Santa Rosa has adequate stormwater drainage capacity due to the number and location of creeks; however Southern Santa Rosa is susceptible to flooding along Colgan and Roseland creeks. Stormwater drainage is under joint management of the City and the SCWA. The Kelly Farm, Brown Farm, and Alpha Farm sites have no constructed storm drainage system. Stormwater runoff sheet flows to natural drainages.

Sonoma County

The SCWA manages flood protection and drainage facilities, and the maintenance of natural waterways subject to flooding, erosion and sediment control activities to 80 miles of creeks throughout their service area. In 1958, the SCWA adopted the Central Sonoma Watershed Project to alleviate flooding in the Santa Rosa urban area. The Central Sonoma Watershed Project includes five flood protection reservoirs including Spring Lake, Matanzas Creek Reservoir, Piner Creek Reservoir, Brush Creek Middle Fork Reservoir, and Spring Creek Reservoir.

Solid Waste

The Sonoma County Waste Management Agency (SCWMA) is a division of the Sonoma County Transportation and Public Works Department. SCWMA is a joint powers authority of the nine incorporated cities within Sonoma County which implement regional waste diversion programs as required by the California Integrated Waste Management Act of 1989 (AB939).

Sonoma County and Santa Rosa

The Central Landfill located at 500 Meham Road, approximately 3 miles west of the City of Cotati, is the only municipal solid waste disposal site within Sonoma County but is currently inactive and used as a centralized transfer station. There are six other permitted transfer stations throughout Sonoma County that are used to consolidate, sort, and transfer waste to the Central Landfill. Santa Rosa’s solid waste is transported to the Central Landfill for disposal to the Redwood Sanitary Landfill located at 8950 Redwood Highway, Novato, Marin County, California. The Redwood Sanitary Landfill is a Class III permitted landfill that accepts mixed municipal, sludge (biosolids), agricultural, construction/demolition, asbestos, tires, ash, wood waste, and other designated waste products. The landfill has permitted capacity of 2,300 tons per day. The Redwood Landfill Solid Waste Facilities Final EIR (July 2005) concluded that the landfill could reach capacity in 2024.

GOALS, OBJECTIVES, AND POLICIES

Table 4.15-1 identifies public services, utilities and recreation goals, objectives, and policies that relate to the SSP. The table also indicates which criteria in the Public Services, Utilities, and Recreation Section are responsive to each set of policies.

TABLE 4.15-1
Goals, Objectives, and Policies – Public Services, Utilities, and Recreation

Adopted Plan Document	Document Section	Document Numeric Reference	Policy	Relevant Evaluation Criteria¹
Police and Fire				
Santa Rosa General Plan	Public Services and Facilities Element	Goal PSF-E	Provide fire and police services that ensure the safety of the community.	1
		Policy PSF-E-1	Provide for citizen safety through expedient response to emergency calls.	1
Parks and Recreation				
Santa Rosa General Plan	Public Services and Facilities Element	Policy PSF-A-2	Acquire and develop new park facilities to achieve a citywide standard (including school parks and non-City public open space) of 6 acres of parkland per 1,000 residents.	2

TABLE 4.15-1
Goals, Objectives, and Policies – Public Services, Utilities, and Recreation

Adopted Plan Document	Document Section	Document Numeric Reference	Policy	Relevant Evaluation Criteria ¹
Water, Sewer, and Stormwater Drainage				
Santa Rosa General Plan	Public Services and Facilities Element	Goal PSF-F	Ensure that an adequate supply of water is available to serve existing and future needs of the City.	1
		Goal PSF-I	Manage, maintain, and improve stormwater drainage and capacity.	4
		Policy PSF-I-3	Require erosion and sedimentation control measures to maintain an operational drainage system, preserve drainage capacity, and protect water quality.	4
		Policy PSF-I-4	Require measures to maintain and improve the storm drainage system, consistent with goals of the Santa Rosa Waterways Plan, to preserve natural conditions of waterways and minimize paving of creek channels.	4
Solid Waste				
Santa Rosa General Plan	Public Services and Facilities Element	Goal PSF-H	Meet the City’s solid waste disposal needs, while maximizing opportunities for waste reduction and recycling.	1

Source: Santa Rosa 2002

Note: Evaluation criteria are identified in Table 4.15-2.

EVALUATION CRITERIA WITH SIGNIFICANCE THRESHOLDS

The evaluation criteria for Public Services, Utilities, and Recreation are presented in Table 4.15-2. These criteria are drawn from General Plan requirements.

TABLE 4.15-2
Evaluation Criteria with Significance Thresholds – Public Services, Utilities, and Recreation

Evaluation Criteria	As Measured by	Significance Thresholds	Sources of Criteria
1. Will the SSP increase demand for police and fire services; water and sewage treatment services; or solid waste disposal facilities to such a degree that accepted service standards are not maintained?	Additional personnel, equipment or capital facilities that would be needed to serve the Project.	Any additional personnel, equipment or capital facilities required beyond existing or planned capacity.	CEQA Guidelines Appendix G, Checklist Item XIII (a) and Checklist Items XVI (e) and (f) General Plan of the City of Santa Rosa; Title 14, California Code of Regulations §1270, State Fire Safe Regulations
2. Will the SSP increase demand for park and recreation facilities to such a degree that accepted service standards are not maintained, requiring the construction of new facilities?	Additional recreational demand	Any additional demand beyond existing or planned capacity	CEQA Guidelines Appendix G, Checklist Item XIV (a) and (b) General Plan of the City of Santa Rosa;
3. Will the SSP conflict with wells, septic fields, or water or wastewater utilities?	Location of the SSP component in relation to wells, water lines, septic or wastewater lines	SSP component within 50 feet of wells or water lines, or within 10 feet of septic or wastewater lines	Title 22, California Code of Regulations
4. Will the SSP result in the construction of new or expanded water treatment, wastewater treatment facilities, or storm drainage facilities?	Need for new facilities.	Any new facilities beyond those included in the SSP	CEQA Guidelines Appendix G, Checklist Items XVI (b) and (c)

METHODOLOGY

The adopted General Plans for the respective jurisdictions were used to determine standards for services provided for public facilities, utilities and recreation. In addition, where additional specific information was required, research was conducted, and personal contacts were made.

Increased demand for public services, utilities, solid waste disposal facilities, and recreation are evaluated by determining whether the presence of SSP facilities and the additional personnel employed to construct, operate, or maintain the SSP would increase demand for

services in the study area to such a degree that service standards are not met. To determine potential conflicts resulting from operation and maintenance of SSP facilities, it has been estimated that there would be a need for one full-time employee for the Pump Station component and no increase in employees for the Storage component.

Impacts to wastewater facilities or storm drainage were evaluated based on the need for expansion of or modifications to existing wastewater and storm drainage facilities under City or County jurisdiction as a direct result of the Project. As described in Chapter 6 of this Program EIR, including the Seasonal Storage component, would induce growth within the region by providing sewage treatment facilities and disposal/reuse of recycled water for approximately 55,000 additional people. Any impacts of this growth on public services have been identified in the General Plan EIRs certified for each of the subregional partners, and the impacts and mitigation measures from the General Plan EIRs are summarized in the Program EIR.

IMPACTS AND RECOMMENDED MITIGATION MEASURES

TABLE 4.15-3
Public Services, Utilities, and Recreation Impacts

Evaluation Criteria	Significance Threshold	Impact	Type of Impact ¹	Level of Significance ²
15.1. Will the SSP increase demand for police and fire services; water and sewage treatment services; or solid waste disposal facilities to such a degree that accepted service standards are not maintained?	Any additional personnel, equipment or capital facilities required beyond existing or planned capacity.	Less than significant	CO&M/P	○
15.2. Will the SSP increase demand for park and recreation facilities to such a degree that accepted service standards are not maintained, requiring the construction of new facilities?	Any additional demand beyond existing or planned capacity.	Minimal	C, O&M/P	○
15.3. Will the SSP conflict with wells, septic fields, or water or wastewater utilities?	SSP facilities within 50 feet of wells or water lines, or within 10 feet of septic or wastewater lines.			
<i>KF1, AF</i>		Temporary interruption of recycled irrigation water	C/O&M	○
<i>KF2, BF1, and BF2</i>		None	C/O&M	==

TABLE 4.15-3
Public Services, Utilities, and Recreation Impacts

Evaluation Criteria	Significance Threshold	Impact	Type of Impact ¹	Level of Significance ²
15.4. Will the SSP result in the construction of new or expanded water treatment, wastewater treatment facilities, or storm drainage facilities?	Any new facilities beyond those included in the SSP	None	C/O&M	==

Notes: 1. Type of Impact:
 C: Construction
 O&M: Operation and Maintenance
 P: Permanent

2. Level of Significance:
 ● Significant impact before and after mitigation
 ⊙ Significant impact before mitigation; less than significant impact after mitigation
 ○ Less than significant impact; no mitigation proposed
 == No impact

Impact 15.1. Will the SSP increase demand for police and fire services; water and sewage treatment services; or solid waste disposal facilities to such a degree that accepted service standards are not maintained?

Analysis: *Storage component - Less than Significant: KF1, KF2, BF1, BF2, and AF*

Construction and operation of the Storage component would not increase demand for public services and facilities to such a degree that accepted service standards are not maintained.

For fire protection and emergency services, the SSP sites would continue to be served by the SRFD and its mutual aid agreement with other agencies. Construction activities associated with the Storage component could result in injuries to construction workers or properties and increase the demand for emergency response at project sites. In addition, because construction activities would bring ignition sources (e.g., vehicle exhaust pipes can ignite dry grasses) into high fire hazard areas, there may be a temporary increase in the need for fire protection services. Project Measure 3.2.11, Construction Management Program, requires that local police, public works, and fire departments for each jurisdiction (city, county, and state) where construction is expected to occur, shall receive advance notification of construction activities and requires procedures to manage ignition sources and to reduce the risk and hazard from wildland fires. It also requires that the Construction Manager have on site the phone number for the local fire department(s) and have a phone available when working in high fire hazard areas should additional fire fighting capabilities be required. These measures would reduce the need for fire protection and emergency services during project construction.

Emergency service providers would be able to respond adequately to emergencies because these service providers are located within adequate response times and close distances. In 2005, the City selected a new fire

station location (Fire Station No. 10) at Corporate Center Parkway. Current plans call for the construction of an interim fire station within an existing building. The new fire station is located less than 2 miles from the SSP sites. The new fire station would be one of three new fire stations planned by the City's General Plan. The others are anticipated to be located in northeast and in southeast Santa Rosa.

Although storage pond embankment failure is extremely unlikely, such an event would increase the need for emergency services. The California Office of Emergency Services requires preparation of an inundation map and development of a downstream evacuation plan for areas within the potential inundation area (California Water Code §6002, and California Government Code §8589.5). An inundation map and downstream evacuation plan would be prepared as required by the Office of Emergency Services (and adopted as part of the Project in Project Measure 3.2.13).

For police protection services, the sites would continue to be served by the City. The Sonoma County Sheriff's Department would continue to be responsible for law enforcement services of the unincorporated area surrounding the storage pond sites. The presence of any development has a potential for vandalism of project facilities, thereby potentially increasing the need for police protection services. However, such a need would not be to such a degree that accepted service standards are not maintained.

Water would be needed during construction, such as for dust suppression. For dust control and other construction-related processes that do not require potable water, recycled water would be obtained from the existing onsite reuse pipeline. A temporary water line may be constructed off the existing Geysers pipeline to storage tanks at the storage pond site or the permanent reuse pipeline would be installed prior to construction of the ponds. These uses would not impact existing service standards. The Storage component would not increase the demand for sewage treatment services. The AF alternative would replace the two existing recycled water storage ponds with one new pond with a 177 MG capacity. To accommodate the temporary removal of 31 MG storage capacity from the subregional system, the amount of recycled water discharged to the Laguna may need to be temporarily increased until the new 177 MG storage pond is operational. This short-term loss of 2 percent of the Subregional System's storage capacity would not interfere with effective functioning of the System.

Solid waste disposal facilities contracted with the Sonoma County Solid Waste Management Authority would accept solid waste generated by the Storage component construction. Such materials could include demolition waste and excess spoil material. Soil cut and fill would be balanced to the extent possible. Table 4.15-4 lists the type of materials that would be removed from each SSP site, and also estimates the quantity of excess fill generated by construction. Any excess material would be hauled away by the contractor for reuse or for disposal at the Redwood Sanitary Landfill. The Redwood Sanitary Landfill continues to have sufficient capacity.

TABLE 4.15-4
Types of Materials and Amounts of Fill Removed

SSP Site	Types of Materials	Excess Fill (CY)
KF1	Construction debris, irrigation system, monitoring wells, and vegetation	None
KF2	Construction debris, irrigation system, monitoring wells, and vegetation	29,600
BF1	Construction debris, irrigation system, monitoring wells, and vegetation	35,600
BF2	Construction debris, irrigation system, wells, weather station, and vegetation	None
AF	Construction debris, irrigation system, wells, pump station and control building, and vegetation	12,600

The Storage component would not require additional staff for operation and maintenance and therefore would not change the ratio of service personnel or facilities to population or employment.

Pump Station component - Less than significant: KF1, KF2, BF1, BF2, and AF

The Pump Station component consists of construction and operation of a pump station and electrical power transmission lines to provide power to the pump station.

As described above under the Storage component, for emergency services, construction-related activities could result in injuries to construction workers or properties and increase the demand for emergency response at project facility sites. Emergency service providers in the area would be able to respond adequately to emergencies because these service providers are located within adequate response times and close distances. Project Measure 3.2.11, Construction Management Program, requires that local police, public works and fire departments shall receive advance notification of construction activities. Given the adequate existing emergency services personnel, equipment and response times, pump station construction would not increase the demand for emergency services to such a degree that accepted service standards are not maintained.

Pump station operation would be powered by electricity, which is a potential fire hazard. Because a fire-proof masonry building would house the pumping apparatus, the risk of a wildland fire is substantially reduced. Given the adequate existing fire protection services personnel, equipment, and response times, pump station construction and operation would not increase the demand for fire protection services to such a degree that accepted service standards are not maintained.

The presence of any development has a potential for vandalism of project facilities, thereby potentially increasing the need for police protection services. However, such a need would not be to such a degree that accepted service standards are not maintained.

The pump station would not conflict with sewage treatment facilities since no increase in services, staffing or construction of new service facilities would occur. Water would be needed during construction. For dust control and other construction-related processes that do not require potable water, recycled water would be used. The small amount of potable water needed for construction would not impact existing service standards.

Solid waste disposal facilities contracted with the Sonoma County Solid Waste Management Authority would accept solid waste generated by construction of the pump stations. Such materials could include excess spoil material. Soil cut and fill would be balanced to the extent possible. Any excess material would be hauled away by the contractor for reuse or to the Redwood Sanitary Landfill for disposal. The Redwood Sanitary Landfill continues to have sufficient capacity.

Pump station operation and maintenance would be performed by existing City staff. So there would be no increase in the need for public services to support additional personnel.

Mitigation: No mitigation is needed.

Impact: 15.2. Will the SSP increase demand for park and recreation facilities to such a degree that accepted service standards are not maintained, requiring the construction of new facilities?

Analysis: *Storage component - Less than Significant: KF1, KF2, BF1, BF2, and AF*

Storage pond construction would bring construction workers into the area as listed in Table 2-5 in Chapter 2. Any increased demand for park and recreation facilities during the approximately 2- to 3-year construction period is expected to be minimal because the majority of construction workers would come from within the SSP study area or within nominal commute distances rather than from outside the area.

SSP operations would not increase demand for park and recreation facilities beyond existing or planned capacity.

Pump Station component - Less than Significant: KF1, KF2, BF1, BF2, and AF

Pump Station construction would bring construction workers into the area. Any increased demand for park and recreation facilities during the construction period is expected to be minimal, because the majority of construction workers would come from within the SSP study area or within nominal commute distances rather than from outside the area. Therefore, pump station construction would not increase the demand for park and

recreation facilities beyond existing or planned capacity. Pump station maintenance and operation would be performed by existing City staff and therefore would not increase demand for park and recreation facilities.

Mitigation: No mitigation is needed.

Impact 15.3. Will the SSP conflict with wells, septic fields, or water or wastewater utilities?

Analysis: *Storage component - Less than Significant: KF1 and AF*

KF1. The significance threshold for impacts to wells, septic fields, or water or wastewater utilities is any facility located within 50 feet of wells or water lines, or within 10 feet of septic or wastewater lines. The KF1 storage pond would not be located within 50 feet of wells or potable water lines, or within 10 feet of septic or wastewater lines. Therefore, construction and operation of the Storage component at the KF1 site would not conflict with wells, septic fields, or water or wastewater utilities. An existing recycled water irrigation line that transects the K1 storage pond site would be capped and rerouted around the pond. Use of this irrigation line would only be temporarily affected. This is a less-than-significant impact.

AF. The AF storage pond would not be located within 50 feet of wells or potable water lines, or within 10 feet of septic or wastewater lines. Therefore, construction and operation of the Storage component at the AF site would not conflict with wells, septic fields, or water or wastewater utilities.

Storage pond construction would temporarily interrupt the provision of recycled irrigation water to a neighboring farm. Therefore, a temporary pipeline with temporary trailer-mounted pumps would be installed to provide irrigation during pond construction. This is a less-than-significant impact.

Storage component - No Impact: KF2, BF1, and BF2

The KF2, BF1 and BF2 storage ponds would not be located within 50 feet of wells or potable water lines, or within 10 feet of septic or wastewater lines. Therefore, construction and operation of the Storage component at these sites would not conflict with wells, septic fields or water or wastewater utilities.

Pump Station component - No Impact: KF1, KF2, BF1, BF2, and AF

The Pump Station component at the KF1, KF2, BF1, BF2, and AF sites would not be located within 50 feet of wells or potable water lines, or within 10 feet of septic or wastewater lines. Therefore, construction and operation of the Pump Station component would not conflict with wells, septic fields or water or wastewater utilities.

Mitigation: No mitigation is needed.

Impact 15.4. Will the SSP result in the construction of new or expanded water treatment, wastewater treatment facilities, or storm drainage facilities?

Analysis: *Storage component - No Impact: KF1, KF2, BF1, BF2, and AF*

The Storage component would not require the construction of new or expanded water treatment or wastewater treatment facilities, and no public storm drainage facilities would be needed.

Pump Station component - No impact: KF1, KF2, BF1, BF2, and AF

The Pump Station component would not involve or require the construction of new or expanded water treatment or wastewater treatment facilities, and no public storm drainage facilities would be needed.

Mitigation: No mitigation is needed.

No Project Alternative

Impact: 15.1. Will the No Project Alternative increase demand for police and fire services; water and sewage treatment services; or solid waste disposal facilities to such a degree that accepted service standards are not maintained

Significant

Under this alternative, the Subregional System would include only storage facilities that were existing as of March 2007.

Without additional storage capacity, the Subregional System would need to seek out other means of complying with temperature and dissolved oxygen objectives for implementation of the Discharge Compliance Project (DCP). These other means would likely consist of cooling towers, adjustment of the rate and/or timing of discharge, storage pond aerators, provision of additional riparian canopy, or a combination of these measures. The DCP Draft EIR concludes that some of these other measures would be effective at achieving compliance with temperature and oxygen objectives if the Laguna Discharge Alternative were to be selected. The DCP Draft EIR also concludes that if the Russian River Discharge Alternative were selected, none of these alternate measures would be fully effective at mitigating temperature impacts in the cumulative condition if the proposed Basin Plan amendment for temperature and dissolved oxygen were approved by the North Coast Regional Water Quality Control Board. No decision has yet been made by either the City or the North Coast Regional Board whether discharge would continue in the Laguna or would need to be relocated to the Russian River.

The impacts of the No Project Alternative are largely speculative. In the event the SSP is not implemented, other approaches would have to be used to ensure compliance with temperature and dissolved oxygen objectives for implementation of the DCP. The approaches that would have to be used would depend on regulatory and permitting decisions that have yet to be made

by the Regional Board, particularly with respect to temperature and oxygen objectives. At this time, the most that can be said is that alternative approaches would have to be taken. Which alternative approaches will be implemented cannot be determined at this time¹.

Although additional seasonal storage capacity could solve the compliance challenges of the DCP regarding temperature and dissolved oxygen, much more capacity would be required than provided by the 500 MG of this Seasonal Storage Project. Up to 970 MG additional capacity would be needed to comply with the proposed Basin Plan Amendment for continued Laguna Discharge; up to 2,910 MG of additional capacity would be needed for Russian River Discharge².

The Seasonal Storage Project is therefore an important contributor for discharge compliance, but does not solve the challenges for all configurations. Without the SSP, that is, if the No Project alternative were implemented, the options for discharge compliance would be restricted, flexibility in solving discharge challenges would be reduced, and potentially, significant discharge water quality impacts would result, causing a significant and unavoidable impact to sewage treatment services.

Mitigation: Not applicable.

Impact: 15.2. Will the No Project Alternative increase demand for park and recreation facilities to such a degree that accepted service standards are not maintained, requiring the construction of new facilities?

Analysis: *No Impact*

The No Project Alternative would not involve any new activity, would not increase the number of employees, and therefore would have no effect on school, park, and recreation facilities.

Mitigation: Not applicable.

Impact: 15.3. Will the No Project Alternative conflict with wells, septic fields, or water or wastewater utilities?

Analysis: *No Impact*

The No Project Alternative would not involve any new activity and therefore would not conflict with wells, septic fields, or water or wastewater utilities.

Mitigation: Not applicable.

¹ The environmental impacts of the alternative approaches (cooling towers, adjustment of the rate and/or timing of discharge, storage pond aerators, provision of additional riparian canopy, or a combination of these measures) have been evaluated in the DCP Draft EIR (Santa Rosa March 2008) and mitigation measures have been recommended.

² The environmental impacts of up to 3,200 MG of additional storage were evaluated in the IRWP Program EIR.

Impact: **15.4. Will the No Project Alternative result in the construction of new or expanded water treatment, wastewater treatment facilities, or storm drainage facilities?**

Analysis: *No Impact*

The No Project Alternative would not involve construction of any new facilities.

Mitigation: Not applicable.

CUMULATIVE IMPACTS

Cumulative growth projections of General Plans of Sonoma County and other jurisdictions in the SSP area would result in additional demands on local services.

Impact: **15.1C. Will the SSP plus cumulative projects increase demand for police and fire services; water and sewage treatment services; or solid waste disposal facilities, to such a degree that accepted service standards are not maintained?**

Analysis: *Less than Significant*

The SSP would cause only minor increases in demand for police and fire services and solid waste disposal facilities. This increase in demand for police and fire services would occur predominantly during the construction period when a potential for construction worker injuries and an increase in fire hazards from construction equipment exists at the project site. Project measure 3.2.11 Construction Management Program, requires that local police, public works and fire departments shall receive advance notification of construction activities and requires procedures to manage ignition sources and to reduce the risk and hazard from wildland fires. It also requires that the Construction Manager have on site the phone number for the local fire department(s) and have a phone available should additional fire fighting capabilities be required. These measures would reduce the need for fire protection and emergency services during project construction.

An increase in demand for solid waste disposal facilities and potable and recycled water also would occur during the construction phase when construction and demolition waste would be generated and when water would be needed for dust control and other construction-related processes.

In the longer term, the Project could slightly increase the need for police protection services because the presence of any development has a potential for vandalism of project facilities. The SSP would not increase the demand for sewage treatment services. In addition, because the SSP would not require the City to hire additional staff for operation and maintenance of the SSP facilities, the SSP would not change the ratio of service personnel or facilities to population and employment.

Provision of public services, including water supply, solid waste disposal capacity, police, and fire services, is a major responsibility of the jurisdictions in the region. However, the small increase in the need for police and fire services, water, and solid waste disposal facilities as a result of the SSP would make a less-than-significant contribution to the cumulative public services impacts that will occur over the next 15 to 20 years in the County.

Mitigation: No mitigation is needed.

Impact: 15.2C. Will the SSP plus cumulative projects increase demand for park and recreation facilities to such a degree that accepted service standards are not maintained, requiring the construction of new facilities?

Analysis: *No Impact*

The SSP would not increase the demand for park and recreation facilities and therefore would not contribute to any cumulative increase in the demand for such facilities.

Mitigation: No mitigation is needed.

Impact: 15.3C. Will the SSP plus cumulative projects conflict with wells, septic fields, or water or wastewater utilities?

Analysis: *No Impact*

SSP facilities would not be located within 50 feet of wells or potable water lines, or within 10 feet of septic or wastewater lines. Therefore, construction and operation of the SSP would not conflict with wells, septic fields or water or wastewater utilities and would not contribute any cumulative impacts to such utilities.

Mitigation: No mitigation is needed.

Impact 15.4C. Will the SSP plus cumulative projects result in the construction of new or expanded water treatment, wastewater treatment facilities, or storm drainage facilities?

Analysis: *No Impact*

The SSP would not require the use of water treatment facilities or the use public storm drainage facilities, and therefore would not contribute to a need for new or expanded facilities that may result from cumulative projects. Although SSP would store recycled water from the Laguna Treatment Plant, it would not result in the construction of new or expanded wastewater treatment facilities.

Mitigation: No mitigation is needed.

SUMMARY OF SIGNIFICANT IMPACTS AND MITIGATION MEASURES

TABLE 4.15-5

Summary of Significant Impacts and Mitigation Measures – Public Services, Utilities, and Recreation

Impact	Level of Significance	Mitigation Measure
No Project		
15.1 The No Project Alternative may impact public services, utilities, and recreation based on evaluation criterion 1.	●	Not applicable.

PREPARERS AND REFERENCES

Preparer

Ladd Miyasaki, Winzler & Kelly

Reviewers

David D. Davis, AICP, Winzler & Kelly

Carol Kielusiak, Winzler & Kelly

Patricia Collins, Winzler & Kelly

References

ESA. 2005. Redwood Landfill Solid Waste Facilities Permit Revision Final Supplemental Environmental Impact Report, Volume 1: Revisions to the Draft Subsequent Environmental Impact Report, SCH# 1991033042. Prepared by Environmental Science Associates for Marin County, July 2005.

Association of Bay Area Governments. 2007. Projections 2007.

Design, Community & Environment. 2006. *Draft Laguna de Santa Rosa Protected Lands Trails Plans*, Sonoma County Agricultural Preservation and Open Space District, November.

Design, Community & Environment. 2007. Laguna de Santa Rosa Protected Lands Trail Plan, 35% submittal. February 1.

Santa Rosa, City of. 2003. Santa Rosa Subregional Water Reclamation System – Incremental Recycled Water Program Environmental Impact Report.

Santa Rosa, City of. 2004. Santa Rosa Subregional Water Reclamation System – Incremental Recycled Water Program Recycled Water Master Plan. February.

Santa Rosa, City of. 2004. Santa Rosa Subregional Water Reclamation System – Incremental Recycled Water Program Addendum to Environmental Impact Report. February.

Santa Rosa, City of. 2006. Santa Rosa Subregional Water Reclamation System – Incremental Recycled Water Program – Discharge Compliance Project Notice of Preparation and Initial Study.

Santa Rosa, City of. 2006. Resolution of the Council of the City of Santa Rosa Adopting the Purpose and Need Statements for the IRWP Urban Reuse Project and the Seasonal Storage Project. October.

Santa Rosa, City of. 2002. Santa Rosa 2020: General Plan.

Santa Rosa, City of. 2005. Protecting Santa Rosa: A Strategic Plan for the Santa Rosa Fire Department. Retrieved at www.ci.santa-rosa.ca.us

Santa Rosa, City of. 2006. City of Santa Rosa Water Master Plan Update. June 2006

- Santa Rosa, City of. 2005. 2005 Annual Report: Santa Rosa Subregional Water Reuse System, Retrieved at www.ci.santa-rosa.ca.us
- Sonoma County Department of Permit and Resource Management. 2006. County of Sonoma Zoning Ordinance. April.
- Sonoma County 2003a. Sonoma County Outdoor Recreation Plan revised on 2003, Retrieved at www.sonoma-county.org/parks
- Sonoma County 2003b. Sonoma County Countywide Integrated Waste Management Plan including the Source Reduction and Recycling Element, Household Hazardous Waste Element, Siting Element, and the Non-Disposal Facility Element. October 15, 2003. Retrieved at www.recyclenow.org
- Sonoma County Water Agency, 2005 Urban Water Management Plan, December 2006. Retrieved at www.scwa.ca.gov
- Sonoma County Water Agency, Water Supply Workshop, Staff Report, November 2004. Retrieved at www.scwa.ca.gov
- North Coast Regional Water Quality Control Board, Water Quality Control Plan for the North Coast Region, September 2006. Retrieved at www.swrcb.ca.gov
- Winzler & Kelly Consulting Engineers and CH2M Hill. 2006. IRWP Seasonal Storage Project Draft Engineering Report-Evaluation of Storage Sites. December.

Persons Contacted

- Caldwell, Donna, Sonoma County Waste Management Division. June 26, 2007.
- Cole, Nancy, Santa Rosa Police Department. March 6, 2007.
- Harris, Mathew Sonoma County Police Department. March 16, 2007.
- Karl, Christine, California Integrated Waste Management Board. June 26, 2007
- Kranz, Lisa, Santa Rosa Community Development Department. June 11, 2007
- Northern, Dan, Santa Rosa Fire Department. March 6, 2007.